

337 NEWBURY STREET

BACK BAY | BOSTON, MA



 **BURTON**

DIESEL
THE AUTHORITY IN STYLE

 **anon.**

Be Inspired in The Mountains
Find Yours at anonclo.com

335

SUNGLASS HUT

LOCATION

Between Massachusetts
Avenue and Hereford Street

TERM

Long Term

ASKING RENT

Upon request

CURRENTLY

Burton

SIZE

Ground Floor: +/- 1,987 Square Feet
Second Floor: +/- 1,273 Square Feet
Basement: +/- 2,009 Square Feet

POSSESSION

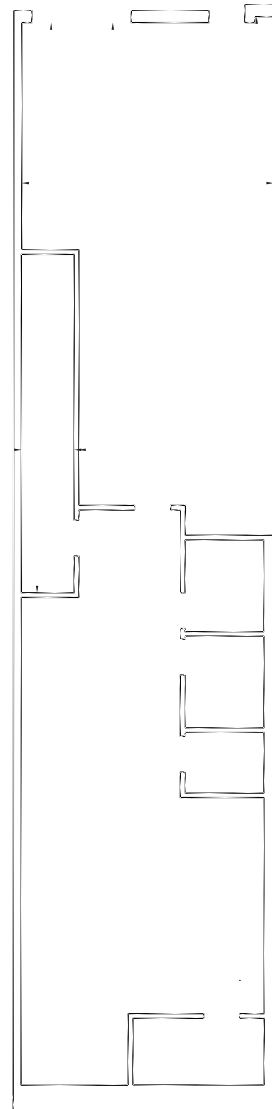
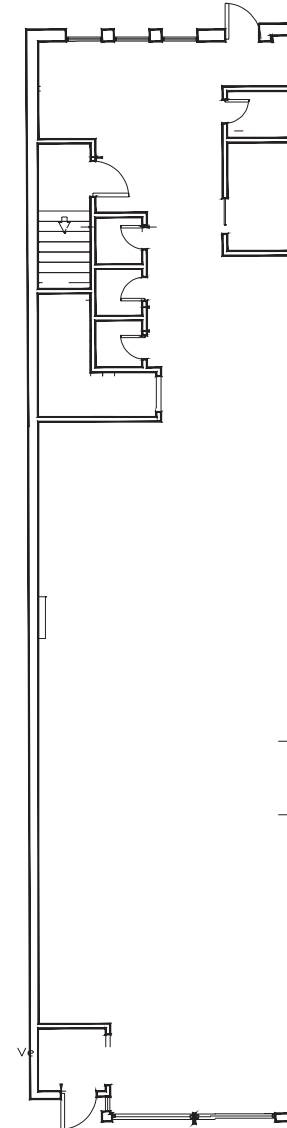
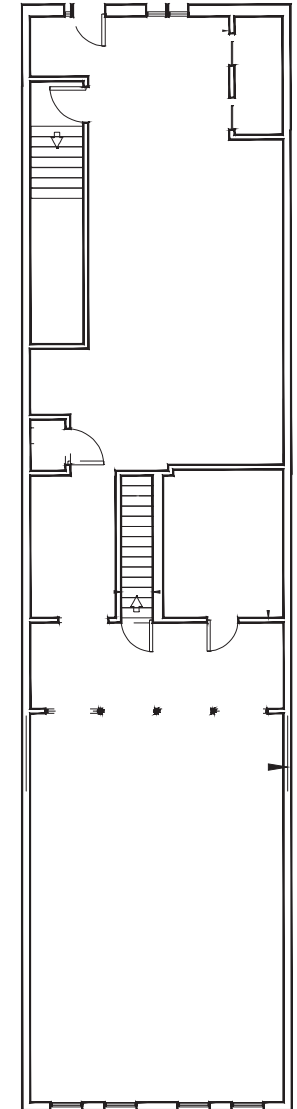
Arranged

NEIGHBORS

Arc'teryx, Patagonia, Reformation, Norrona (coming soon), Champion, UNIQLO, Urban Outfitters, Diesel, Fjallraven, Madewell, The North Face, Room & Board, Ministry of Supply, Brandy Melville, Bo Concept, MUJI Hastens, Rothy's, Buck Mason, Sneaker Junkies and Suit Supply.

COMMENTS

- Incredibly rare, full building flagship opportunity on Newbury Street.
- Beautifully built out space in move in condition.
- \$1,263,851 median home value.
- Strong mix of local, regional and tourist customers.
- Close proximity to all major transportation.
- Daytime population: 161,858

FLOOR PLANS**BASEMENT****GROUND FLOOR****SECOND FLOOR**

337 NEWBURY STREET

FOR INQUIRIES, PLEASE CONTACT

「AMP
PS」

 **DISTRICT**
REAL ESTATE ADVISORS

MATTHEW S. KRELL
mkrell@amp-solutions.com

BECK DANGLER
beck@districtadvisors.com

DAN BODNER
dbodner@amp-solutions.com

RICH LOBKOWICZ
rich@districtadvisors.com

MAX SWERDLOFF
mswerdloff@amp-solutions.com

LIBBY MILLER
lmiller@amp-solutions.com

DIESEL

 **BURLINGTON**

335

sunglassbu

anon.

anon.

© The Museum of Modern Art
1944 Tours and Interpretation