



AM  
PS



MOUNTAIN WEST  
COMMERCIAL REAL ESTATE

# 592 MAIN STREET

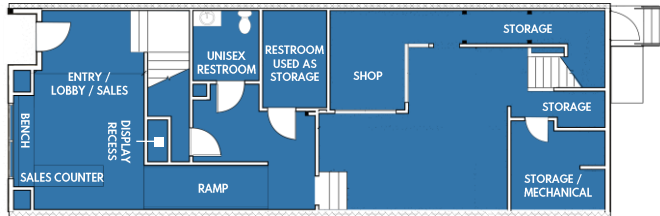
PARK CITY | UTAH

# 592 MAIN STREET

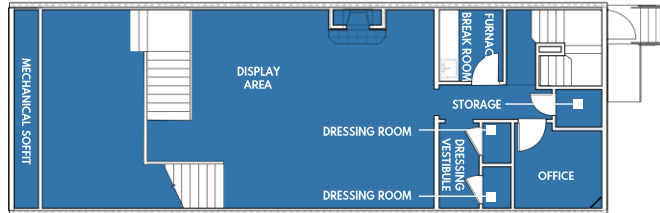
PARK CITY | UTAH

## FLOOR PLANS

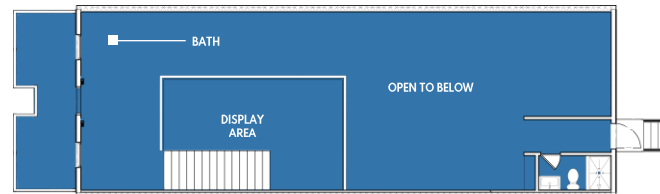
### Ground



### 2<sup>nd</sup> Floor



### 3<sup>rd</sup> Floor



## LOCATION

Between Herber Ave.  
and 5<sup>th</sup> St.

## SIZE

Ground	1,411 SF
2 <sup>nd</sup> Floor	1,339 SF
3 <sup>rd</sup> Floor	1,142 SF
Balcony	200 SF
Total	4,092 SF

## FORMERLY

Black Diamond

## NEIGHBORS

Athleta, Olive + Tweed,  
Sitka Fur Gallery,  
Patagonia, Range Rover  
House Park City, Arhaus  
Studio, Sundance Film  
Festival Box Office

## ASKING RENT

Upon request

## TERM

Long Term

## POSSESSION

January 15<sup>th</sup>, 2024

## COMMENTS

- Gorgeous space on the most desirable block in Park City.
- In the heart of Main St. overlooking the mountain range.



MOUNTAIN WEST  
COMMERCIAL REAL ESTATE

AMP-SOLUTIONS.COM

This information has been secured from sources we believe to be reliable, but we make no representations as to the accuracy of the information. References to square footage are approximate. Tenant must verify the information and bears all risk for any inaccuracies.

# 592 MAIN STREET

PARK CITY | UTAH



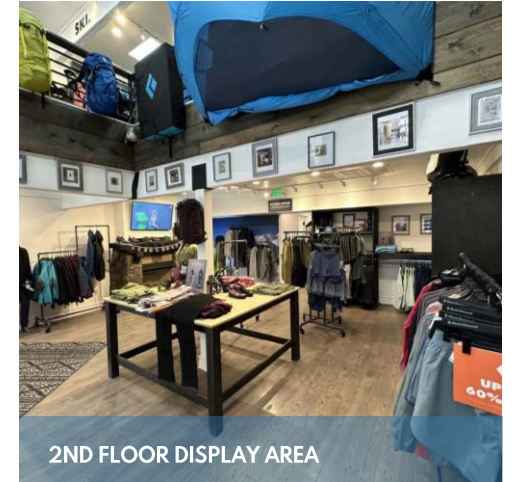
ENTRY / LOBBY / SALES



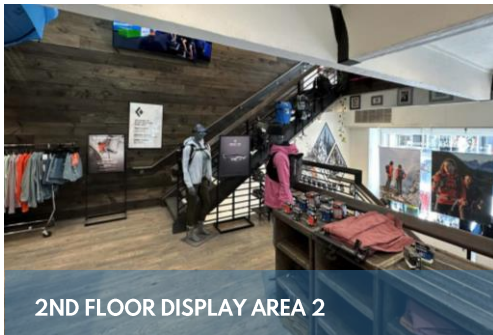
VIEW OF BACK STAIRS



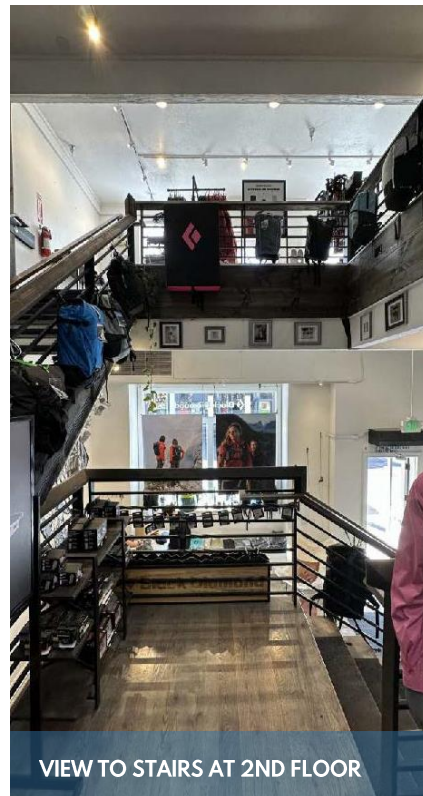
VIEW LOOKING DOWN TO SALES / ENTRY



2ND FLOOR DISPLAY AREA



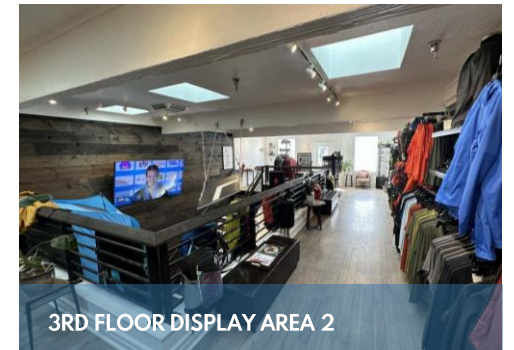
2ND FLOOR DISPLAY AREA 2



VIEW TO STAIRS AT 2ND FLOOR



2ND FLOOR DISPLAY AREA



3RD FLOOR DISPLAY AREA 2



3RD FLOOR DISPLAY AREA