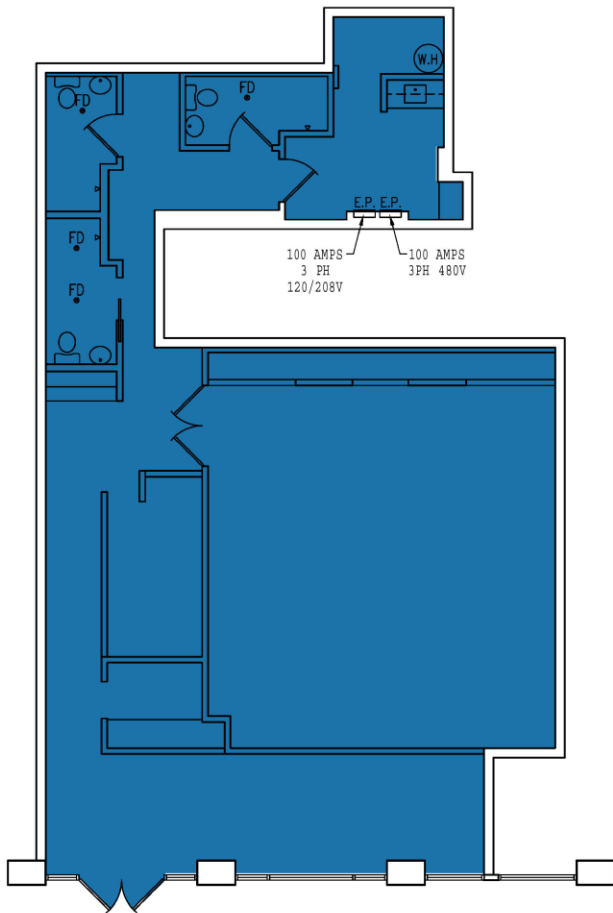




# 1125 MAXWELL LANE

HOBOKEN | NEW JERSEY

## FLOOR PLAN



## LOCATION

11<sup>th</sup> St. Between Sinatra Dr.  
North and Maxwell Ln.

## SIZE

1,794 SF

## HISTORY

Local Barre

## POSSESSION

Immediate

## NEIGHBORS

Martha's Hoboken, Paris Baguette,  
Solidcore, Starbucks, 16 Handles,  
Massage Envy, Hoboken Vets, City  
Bistro, W. Kodak Jewelers, CVS,  
Chase Bank, Hoboken Historical  
Museum, Pilsener Haus Biergarten,  
Hoboken 14<sup>th</sup> Street Pier

## FRONTAGE

On 11<sup>th</sup> St.

## CEILING HEIGHTS

Ground Floor: +/- 10 feet

## ASKING RENT

Upon request

## TERM

Long Term

## COMMENTS

- Built fitness studio
- Short walk to Hoboken waterfront
- Multiple parks within walking distance
- Venting possible
- Outdoor seating possible



**MATTHEW S. KRELL** MKRELL@AMP-SOLUTIONS.COM | 212.328.8537  
**DANIEL A. BODNER** DBODNER@AMP-SOLUTIONS.COM | 212.401.0039

**AMP-SOLUTIONS.COM**

This information has been secured from sources we believe to be reliable, but we make no representations as to the accuracy of the information. References to square footage are approximate. Tenant must verify the information and bears all risk for any inaccuracies.