

# 100 GRAND STREET

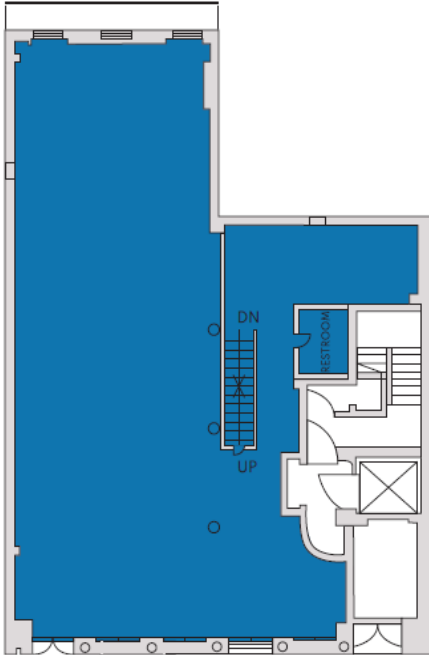
SOHO | NEW YORK, NY



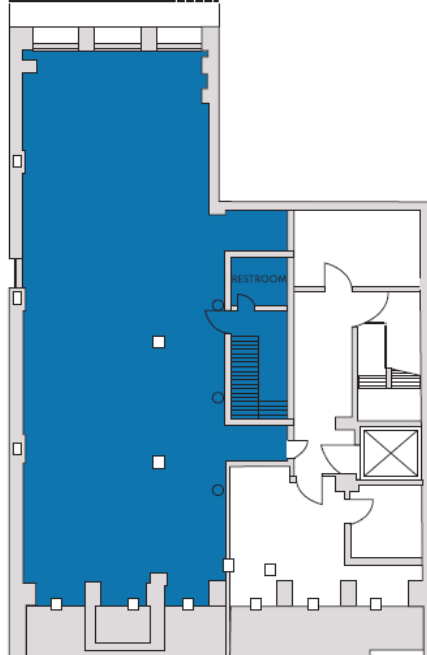
# 100 GRAND STREET

SOHO | NEW YORK, NY

## FLOOR PLANS



GROUND



LOWER LEVEL

## LOCATION

Between Mercer St. and  
Greene St.

## SIZE

Ground	2,850 SF
Lower Level	2,850 SF
Total	5,700 SF

## FRONTAGE

50'

## CEILING HEIGHTS

Ground	18'
Lower Level	10'

## NEIGHBORS

Alexander Wang, Ganni, Courreges,  
Kenzo, Acne Studios, Toteme, Isabel  
Marant, Stone Island, Zimmermann, Off-  
White, Frame, Golden Goose, Staud,  
Theory, Fjallraven, Baggu, Evisu,  
F.P.Journe

## ASKING RENT

Upon request

## TERM

Negotiable

## FORMERLY

Le Pain Quotidien

## POSSESSION

Immediate

## COMMENTS

- Gorgeous space with extraordinary ceiling height and classic SoHo character on both ground and usable lower levels
- Excellent frontage, visibility and flag signage
- Fantastic natural light through numerous windows in front of store and windows in the rear of each level



Matthew S. Krell  
Joshua A. Lewin  
Cindy Gecaj

mkrell@amp-solutions.com  
jlewin@amp-solutions.com  
cgecaj@amp-solutions.com

212.328.8537  
917.741.9209  
914.953.1309

[AMP-SOLUTIONS.COM](http://AMP-SOLUTIONS.COM)

This information has been secured from sources we believe to be reliable, but we make no representations as to the accuracy of the information. References to square footage are approximate. Tenant must verify the information and bears all risk for any inaccuracies.