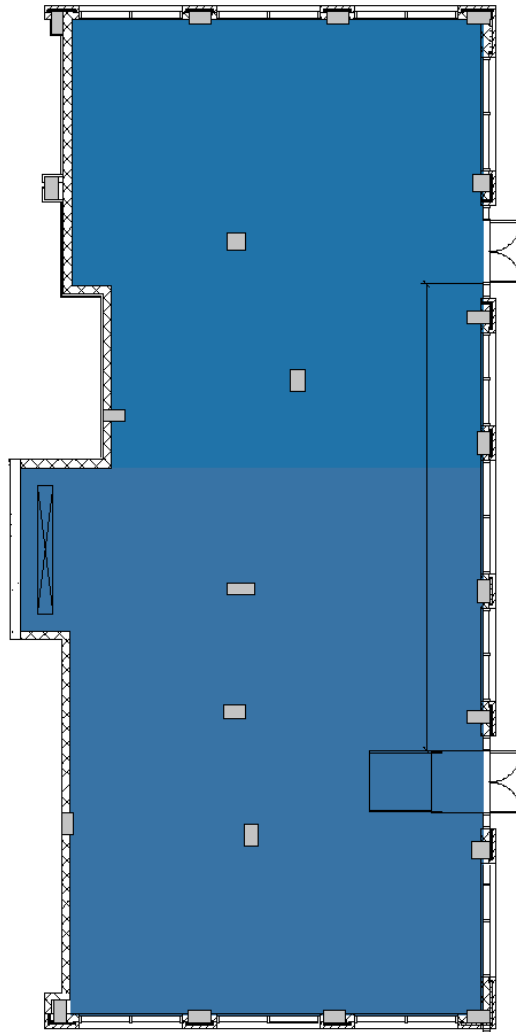




1425 HUDSON ST.

HOBOKEN | NEW JERSEY



LOCATION

15th & Hudson St.

FRONTAGE

+/- 300 ft wraparound

SIZE

Ground: 4,217 SF

CEILING HEIGHTS

Ground Floor: +/- 16 feet

HISTORY

New construction

ASKING RENT

Upon Request

POSSESSION

Immediate

TERM

Short and Long Term

NEIGHBORS

The Little Play Co., Club Pilates, Hand & Stone, Turning Point, Cowabunga, Uptown Pizzeria, City Bistro, Choc O Pain, Wells Fargo Bank, The UPS Store, Creative Interiors, USPS, Shokudo.

COMMENTS

- Vibrant and bright space
- Views of Manhattan
- Corner Unit
- Located on the Hoboken waterfront
- Multiple parks within walking distance