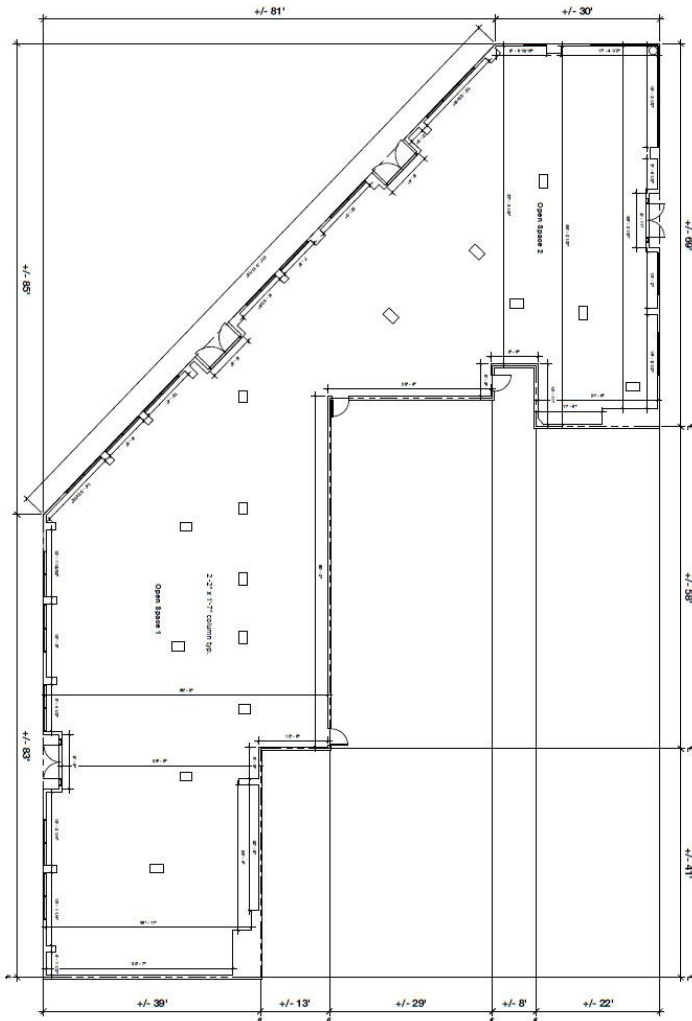


1000 MAXWELL LANE

HOBOKEN | NEW JERSEY

FLOOR PLAN



LOCATION

11th & Hudson St.

SIZE

8,546 SF - Divisible

HISTORY

New Construction

POSSESSION

Immediate

NEIGHBORS

La Isla, Starbucks, Local Barre, 16 Handles, Massage Envy, Hoboken Vets, City Bistro, W. Kodak Jewelers, CVS, Chase Bank, Hoboken Historical Museum, Pilsener Haus Biergarten, Hoboken 14th Street Pier

FRONTAGE

+/- 300 feet wraparound

CEILING HEIGHTS

Ground Floor: +/- 12 feet

ASKING RENT

Upon request

TERM

Long Term

COMMENTS

- Vibrant and bright space
- Corner unit
- High ceilings
- Short walk to Hoboken waterfront
- Multiple parks within walking distance
- Venting possible
- Outdoor seating possible



MATTHEW S. KRELL MKRELL@AMP-SOLUTIONS.COM | 212.328.8537
DANIEL A. BODNER DBODNER@AMP-SOLUTIONS.COM | 212.401.0039

AMP-SOLUTIONS.COM

This information has been secured from sources we believe to be reliable, but we make no representations as to the accuracy of the information. References to square footage are approximate. Tenant must verify the information and bears all risk for any inaccuracies.