



220 N. ABERDEEN STREET

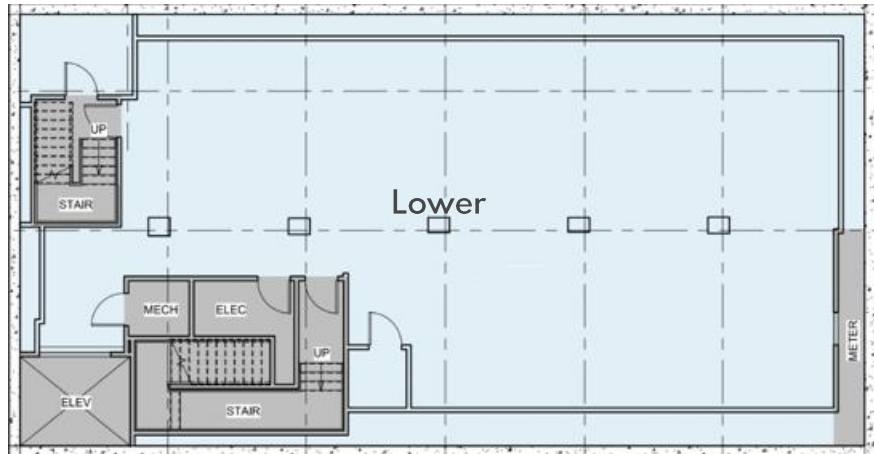
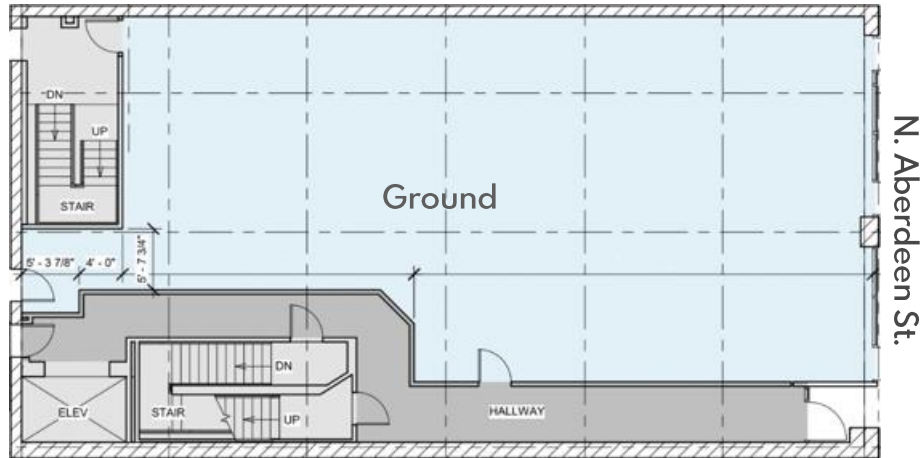
FULTON MARKET | CHICAGO, IL



220 N. ABERDEEN STREET

FULTON MARKET | CHICAGO, IL

FLOOR PLANS



LOCATION

Between W. Fulton Market &
W. Lake Street

ASKING RENT

Upon request

SIZE

Ground 2,384 SF

Lower 2,788 SF

TERM

Negotiable

FRONTAGE

+/-30'

POSSESSION

Immediate

NEIGHBORS

Patagonia, SVRN, Design Within Reach, Google, Herman Miller, Brickermade, Morlen Sinoway Atelier, Swift & Sons, The Aviary, Time Out Market, CVS, Westlake Bath & Kitchen, Federales

COMMENTS

- Fulton Market is Chicago's hottest submarket
- Proximity to Google, Uber, Mondelez, and McDonald's Midwest Headquarters
- Surrounded by Michelin Star dining, flagship hotels, and restaurant row



Matthew S. Krell
Fritz M. Kemerling
Joshua Kellerman

Mkrell@amp-solutions.com
Fkemerling@amp-solutions.com
jkellerman@a-m-inc.com

212.328.8740
212.461.5971
847.727.2624

AMP-SOLUTIONS.COM

This information has been secured from sources we believe to be reliable, but we make no representations as to the accuracy of the information. References to square footage are approximate. Tenant must verify the information and bears all risk for any inaccuracies.