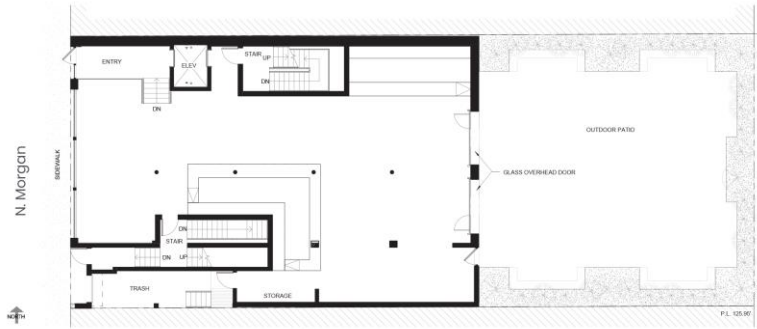




# 165 N. MORGAN STREET

FULTON MARKET | CHICAGO, IL

## FLOOR PLANS



1st Floor  
& Patio



2nd  
Floor



Basement

## LOCATION

Between W. Lake Street  
& W. Randolph Street

## ASKING RENT

Upon request

## SIZE

Ground	4,000 SF
Second	4,000 SF
Basement	3,000 SF
Patio	2,500 SF

## TERM

Negotiable

## FORMERLY

Tenzing Wine & Spirits

## POSSESSION

Arranged

## NEIGHBORS

Patagonia, SVRN, G-Cue  
Billiards, Starbucks, Sweetgreen,  
Shake Shack, Federales,  
Lululemon, Specialized Bikes,  
Jeni's Ice Cream, Anthropologie,  
Free People, Madewell, Nobu  
Hotel

## COMMENTS

- Un-paralleled, full-building  
flagship opportunity
- Proximity to Google, Uber,  
Mondelez, and McDonald's  
Midwest Headquarters
- Surrounded by Michelin Star  
dining, flagship hotels, and  
restaurant row



Matthew S. Krell  
Fritz M. Kemerling  
Joshua Kellerman

Mkrell@amp-solutions.com  
Fkemerling@amp-solutions.com  
jkellerman@a-m-inc.com

212.328.8740  
212.461.5971  
847.727.2624

[AMP-SOLUTIONS.COM](http://AMP-SOLUTIONS.COM)

This information has been secured from sources we believe to be reliable, but we make no representations as to the accuracy of the information. References to square footage are approximate. Tenant must verify the information and bears all risk for any inaccuracies.