

112 N. MAY STREET

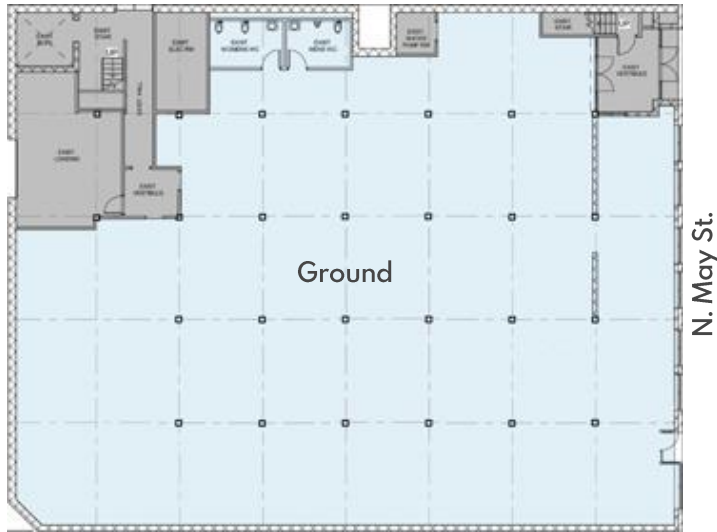
FULTON MARKET | CHICAGO, IL



112 N. MAY STREET

FULTON MARKET | CHICAGO, IL

FLOOR PLAN



LOCATION

Between W. Randolph St.
& W. Washington Blvd.

ASKING RENT

Upon request

SIZE

Ground 8,894 SF

TERM

Negotiable

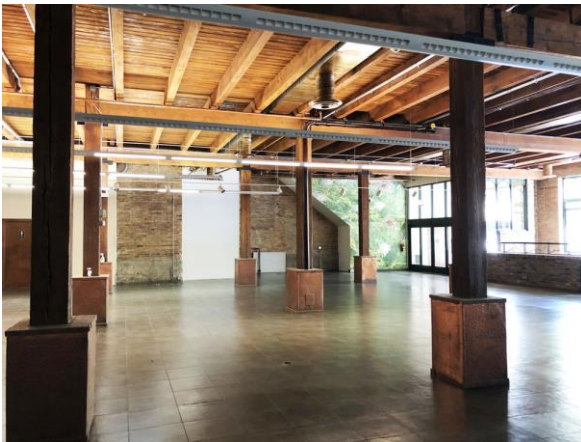
FRONTAGE

+/- 130'

POSSESSION

Immediate

INTERIOR



NEIGHBORS

Patagonia, SVRN, Press Room,
Hyatt House, Goia Chicago,
McDonald's Global, Free People,
FedEx, Walgreens,
Anthropologie, Starbucks,
Westlake Bath & Kitchen,
Goodwill, Dispensary33, Forno
Rosso, Sweetgreen, City Winery

COMMENTS

- Fulton Market is Chicago's hottest submarket
- Proximity to Google, Uber, Mondelez, and McDonald's Midwest Headquarters
- Surrounded by Michelin Star dining, flagship hotels, and restaurant row



Matthew S. Krell
Fritz M. Kemerling
Joshua Kellerman

Mkrell@amp-solutions.com
Fkemerling@amp-solutions.com
jkellerman@a-m-inc.com

212.328.8740
212.461.5971
847.727.2624

AMP-SOLUTIONS.COM

This information has been secured from sources we believe to be reliable, but we make no representations as to the accuracy of the information. References to square footage are approximate. Tenant must verify the information and bears all risk for any inaccuracies.