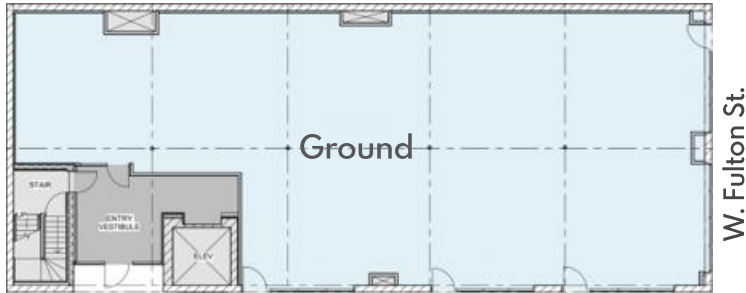




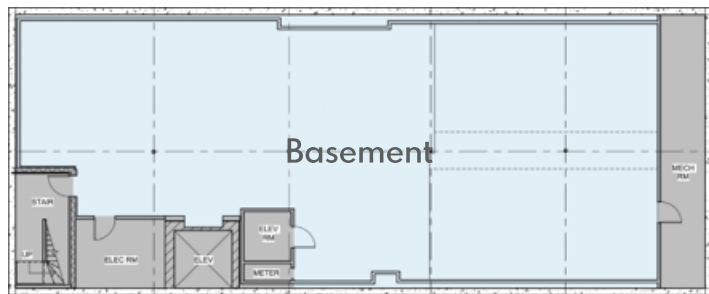
# 1101 W. FULTON STREET

FULTON MARKET | CHICAGO, IL

## FLOOR PLANS



N. Aberdeen St.



## INTERIOR



## LOCATION

Southwest corner of  
W. Fulton and N. Aberdeen St.

## SIZE

Ground 3,487 SF  
Basement 2,933 SF

## FRONTAGE

+/- 120'

## NEIGHBORS

Patagonia, SVRN, Design Within Reach, Google, Herman Miller, Brickermade, Morlen Sinoway, Atelier, Swift & Sons, The Aviary, Time Out Market, Federales, CVS, Westlake Bath & Kitchen

## ASKING RENT

Upon request

## TERM

Negotiable

## POSSESSION

Immediate

## COMMENTS

- Corner opportunity in Chicago's hottest submarket
- Proximity to Google, Uber, Mondelez, and McDonald's Midwest Headquarters
- Surrounded by Michelin Star dining, flagship hotels, and restaurant row



Matthew S. Krell  
Fritz M. Kemerling  
Joshua Kellerman

Mkrell@amp-solutions.com  
Fkemerling@amp-solutions.com  
jkellerman@a-m-inc.com

212.328.8740  
212.461.5971  
847.727.2624

[AMP-SOLUTIONS.COM](http://AMP-SOLUTIONS.COM)

This information has been secured from sources we believe to be reliable, but we make no representations as to the accuracy of the information. References to square footage are approximate. Tenant must verify the information and bears all risk for any inaccuracies.