



1045 W. FULTON STREET

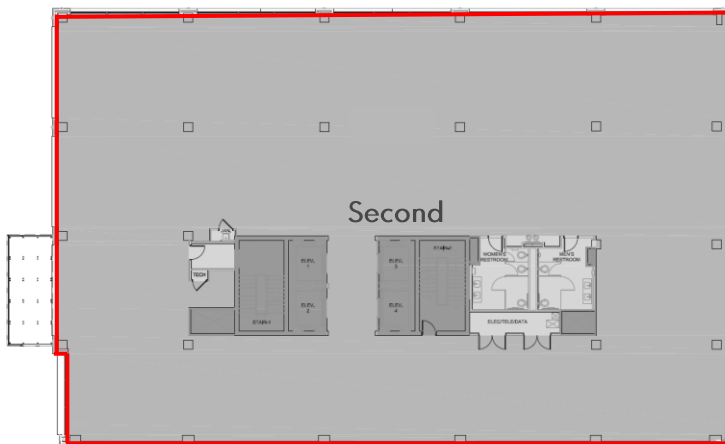
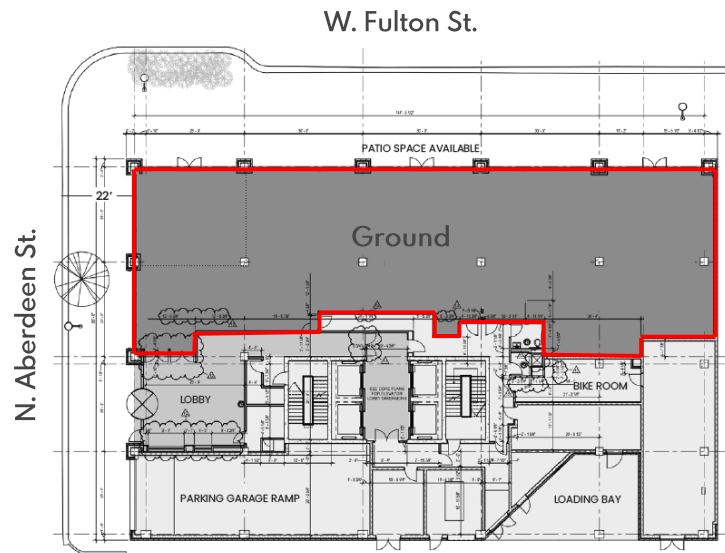
FULTON MARKET | CHICAGO, IL



1045 W. FULTON STREET

FULTON MARKET | CHICAGO, IL

FLOOR PLAN



LOCATION

Southeast Corner of W.
Fulton and N. Aberdeen St.

ASKING RENT

Upon request

SIZE

Ground 6,500 SF
Second* 12,300 SF (Optional)

TERM

Negotiable

FRONTAGE

+/- 150'

POSSESSION

Immediate

NEIGHBORS

Patagonia, SVRN, Design Within Reach, Google, Herman Miller, Brickermade, Morlen Sinoway, Atelier, Swift & Sons, The Aviary, Time Out Market, Federales, CVS, Westlake Bath & Kitchen

COMMENTS

- Multiple configurations and divisions to be considered.
- Up to 18,800 square feet.
- Proximity to Google, Uber, Mondelez, and McDonald's Midwest Headquarters
- Surrounded by Michelin Star dining, flagship hotels, and restaurant row.



Matthew S. Krell
Fritz M. Kemerling
Joshua Kellerman

Mkrell@amp-solutions.com
Fkemerling@amp-solutions.com
jkellerman@a-m-inc.com

212.328.8740
212.461.5971
847.727.2624

AMP-SOLUTIONS.COM

This information has been secured from sources we believe to be reliable, but we make no representations as to the accuracy of the information. References to square footage are approximate. Tenant must verify the information and bears all risk for any inaccuracies.