

156 NEWBURY STREET

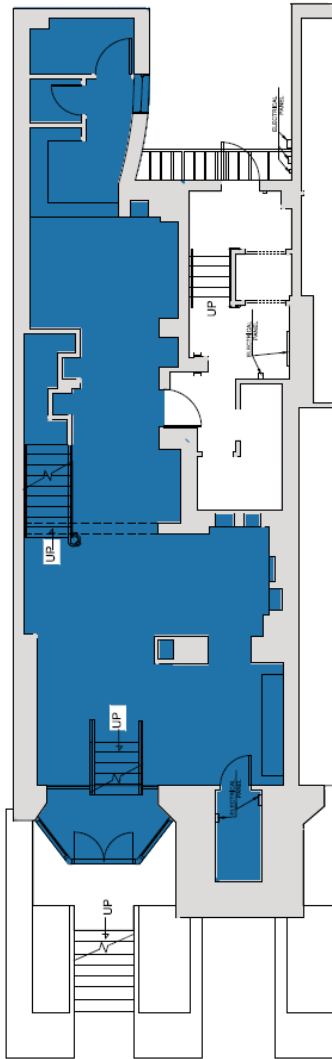
BACK BAY | BOSTON, MA



156 NEWBURY STREET

BACK BAY | BOSTON, MA

FLOOR PLAN



LOCATION

Between Dartmouth St.
and Exeter St.

SIZE

Unit 20 - Walk 1,287 SF
Down

CURRENTLY

Benefit Cosmetics

NEIGHBORS

FRAME, Bluemercury, Jenni Kayne, Levain Bakery, Alice + Olivia, Nike, Dr. Martens, Vuori, Anthropologie, lululemon, ZARA, State & Liberty, Allbirds, Bonobos, LUSH, Marine Layer, Marimekko, illesteva, INTERMIX, Longchamp, Trend, Lilly Pulitzer, Credo, Pure Glow, CAVA, Sweetgreen, Ben & Jerry's, J.P. Licks, Blue Bottle Coffee, The Capital Burger.

ASKING RENT

Upon request

TERM

Pop - Up, Short and Long Term

POSSESSION

09/01/2022

COMMENTS

- More than 16 million SF of office immediately surrounding.
- Two blocks from all major transportation.
- Median Age: 31 years old
- Average HH Income: \$144,180
- 12 Million visitors per annum
- 72% Educational Attainment
- Walk score: 98



Matthew S. Krell
Fritz M. Kemerling
Joshua A. Lewin

Mkrell@amp-solutions.com
Fkemerling@amp-solutions.com
Jlewin@amp-solutions.com

212.328.8740
212.461.5971
212.461.5979

[AMP-SOLUTIONS.COM](https://www.amp-solutions.com)

This information has been secured from sources we believe to be reliable, but we make no representations as to the accuracy of the information. References to square footage are approximate. Tenant must verify the information and bears all risk for any inaccuracies.