

81 NEWBURY STREET

BACK BAY | BOSTON, MA



LOCATION

Newbury St. between Berkley St.
and Clarendon St.

TERM

Long Term

ASKING RENT

Upon request

FORMERLY

John Fluevog

SIZE

Unit 10 – Walk Down: 2,180 Square Feet

POSSESSION

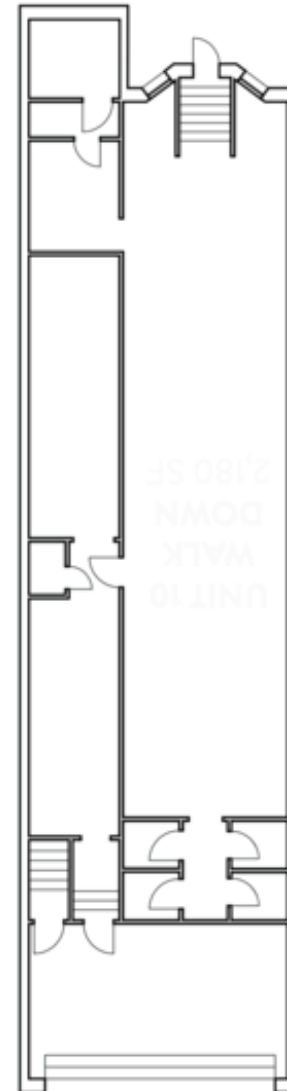
Immediate

NEIGHBORS

FRAME, Bluemercury, Jenni Kayne, Levain Bakery, Alice + Olivia, Nike, Dr. Martens, Vuori, Anthropologie, lululemon, ZARA, State & Liberty, Allbirds, Bonobos, LUSH, Marine Layer, Marimekko, illesteva, INTERMIX, Longchamp, Trend, Lilly Pulitzer, Credo, Pure Glow, CAVA, Sweetgreen, Ben & Jerry's, J.P. Licks, Blue Bottle Coffee, The Capital Burger.

COMMENTS

- Beautifully built out space in move in condition.
- 15 feet of frontage on Newbury
- \$1,263,851 median home value.
- Strong mix of local, regional and tourist customers.
- Close proximity to all major transportation.
- Daytime population: 161,858

FLOOR PLAN

UNIT 10

FOR INQUIRIES, PLEASE CONTACT

AMP
SOLUTIONS

MATTHEW S. KRELL

mkrell@amp-solutions.com

DAN BODNER

dbodner@amp-solutions.com

MAX SWERDLOFF

mswerdloff@amp-solutions.com

LIBBY MILLER

lmiller@amp-solutions.com

DISTRICT
REAL ESTATE ADVISORS

BECK DANGLER

beck@districtadvisors.com

RICH LOBKOWICZ

rich@districtadvisors.com

81 Newbury Street
RETAIL
SPACE
FOR
LEASE

81 Newbury Street
QR CODE

81 Newbury Street
RETAIL
SPACE
FOR
LEASE