



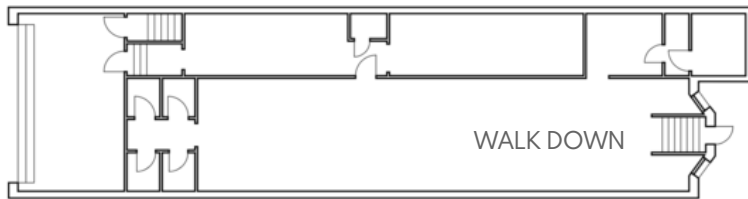
81 NEWBURY STREET

BACK BAY | BOSTON, MA

81 NEWBURY STREET

BACK BAY | BOSTON, MA

GROUND FLOOR



LOCATION

Newbury St. between Berkley St.
and Clarendon St.

SIZE

Unit 10 – Walk Down
2,180 SF

FORMERLY

John Fluevog

ASKING RENT

Upon request

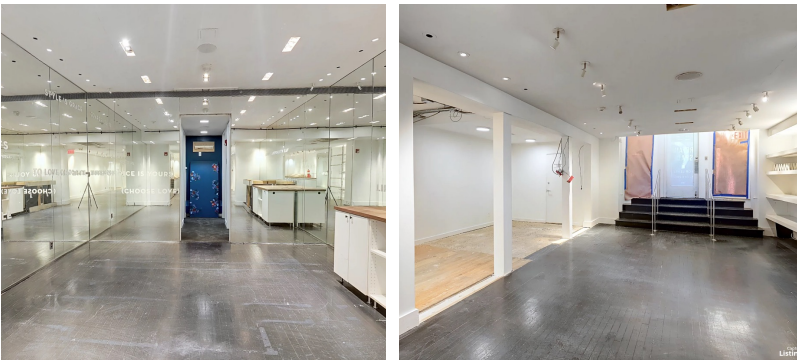
TERM

Long Term

POSSESSION

Immediate

INTERIOR



NEIGHBORS

FRAME, Bluemercury, Jenni Kayne,
Levain Bakery, Alice + Olivia, Nike, Dr.
Martens, Vuori, Anthropologie,
lululemon, ZARA, State & Liberty,
Allbirds, Bonobos, LUSH, Marine Layer,
Marimekko, illesteva, INTERMIX,
Longchamp, Trend, Lilly Pulitzer, Credo,
Pure Glow, CAVA, Sweetgreen, Ben &
Jerry's, J.P. Licks, Blue Bottle Coffee, The
Capital Burger.

COMMENTS

- Beautifully built out space in move in condition.
- 15 feet of frontage on Newbury
- \$1,263,851 median home value.
- Strong mix of local, regional and tourist customers.
- Close proximity to all major transportation.
- Daytime population: 161,858

81 NEWBURY STREET

BACK BAY | BOSTON, MA

FOR INQUIRIES, PLEASE CONTACT



Matthew S. Krell

Mkrell@amp-solutions.com

Dan Bodner

Dbodner@amp-solutions.com

Joshua A. Lewin

Jlewin@amp-solutions.com



Christopher Mearn

Cmearn@districtadvisors.com

Rich Lobkowicz

Rich@districtadvisors.com

Beck Dangler

Beck@districtadvisors.com



AMP-SOLUTIONS.COM

This information has been secured from sources we believe to be reliable, but we make no representations as to the accuracy of the information. References to square footage are approximate. Tenant must verify the information and bears all risk for any inaccuracies.