



# 236 CLARENDON STREET

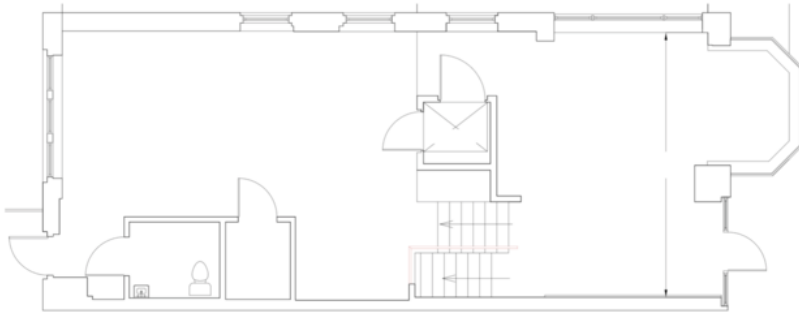
BACK BAY | BOSTON, MA



# 236 CLARENDON STREET

BACK BAY | BOSTON, MA

## FLOOR PLAN



## LOCATION

Corner of Clarendon St. and Public Alley 435

## SIZE

Unit 110 - Ground  
2,543 SF

## FORMERLY

All Too Human

## ASKING RENT

Upon request

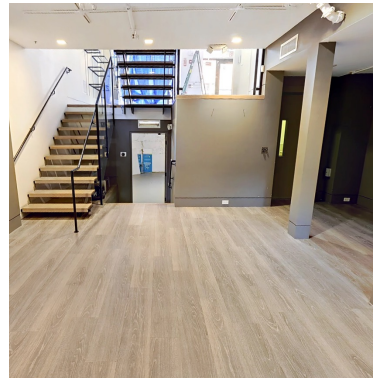
## TERM

Long Term

## POSSESSION

Immediate

## INTERIOR



## NEIGHBORS

FRAME, Bluemercury, Jenni Kayne, Levain Bakery, Alice + Olivia, Nike, Dr. Martens, Vuori, Anthropologie, lululemon, ZARA, State & Liberty, Allbirds, Bonobos, LUSH, Marine Layer, Marimekko, illesteva, INTERMIX, Longchamp, Trend, Lilly Pulitzer, Credo, Pure Glow, CAVA, Sweetgreen, Ben & Jerry's, J.P. Licks, Blue Bottle Coffee, The Capital Burger.

## COMMENTS

- Beautifully built out retail space just steps off Newbury Street.
- 400 SF outdoor patio
- 23 feet of frontage on Clarendon.
- More than 16 million SF of office immediately surrounding.
- Median Age: 31 years old
- Average HH Income: \$144,180
- 12 Million visitors per annum
- 72% Educational Attainment
- Walk score: 98



# 236 CLARENDON STREET

BACK BAY | BOSTON, MA

FOR INQUIRIES, PLEASE CONTACT



**Matthew S. Krell**

**Dan Bodner**

**Joshua A. Lewin**

[Mkrell@amp-solutions.com](mailto:Mkrell@amp-solutions.com)

[Dbodner@amp-solutions.com](mailto:Dbodner@amp-solutions.com)

[Jlewin@amp-solutions.com](mailto:Jlewin@amp-solutions.com)



**Christopher Mearn**

**Rich Lobkowicz**

**Beck Dangler**

[Cmearn@districtadvisors.com](mailto:Cmearn@districtadvisors.com)

[Rich@districtadvisors.com](mailto:Rich@districtadvisors.com)

[Beck@districtadvisors.com](mailto:Beck@districtadvisors.com)



**AMP-SOLUTIONS.COM**

This information has been secured from sources we believe to be reliable, but we make no representations as to the accuracy of the information. References to square footage are approximate. Tenant must verify the information and bears all risk for any inaccuracies.