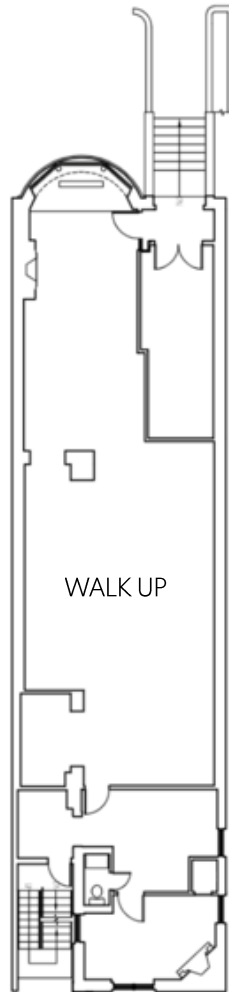




# 160 NEWBURY STREET

BACK BAY | BOSTON, MA

## FLOOR PLAN



## LOCATION

Newbury St. between  
Dartmouth St. and Exeter St.

## SIZE

Unit 100 - Walk Up 2,005 SF

## CURRENTLY

Alps and Meters (Pop-up)

## NEIGHBORS

Bluemercury, Soodee, Aesop,  
Alice + Olivia, Nike, Dr. Martens,  
Timberland, Anthropologie,  
lululemon, ZARA, State & Liberty,  
Allbirds, Bonobos, LUSH, Marine  
Layer, Marimekko, illesteva,  
INTERMIX, Longchamp, Trend,  
Lilly Pulitzer, Credo, Pure Glow,  
CAVA, Sweetgreen, Ben &  
Jerry's, J.P. Licks, Blue Bottle  
Coffee, The Capital Burger.

## ASKING RENT

Upon request

## TERM

Pop - Up, Short and Long Term

## POSSESSION

Arranged

## COMMENTS

- Prime Newbury Street Retail Space
- 14'10" of Frontage
- 79% of the population ranges from ages 18-64
- Strong mix of local, regional and tourist customers.
- Close proximity to all major transportation.



Matthew S. Krell  
Fritz M. Kemerling  
Daniel A. Bodner  
Joshua T. Kaidanow

mkrell@amp-solutions.com  
fkemerling@amp-solutions.com  
dbodner@amp-solutions.com  
jkaidanow@amp-solutions.com

212.328.8740  
212.461.5971  
212.401.0039  
212.466.6003

[AMP-SOLUTIONS.COM](https://www.amp-solutions.com)

This information has been secured from sources we believe to be reliable, but we make no representations as to the accuracy of the information. References to square footage are approximate. Tenant must verify the information and bears all risk for any inaccuracies.