



**MATTHEW S. KRELL**

MKRELL@AMP-SOLUTIONS.COM | 212.328.8537

**DANIEL A. BODNER**

DBODNER@AMP-SOLUTIONS.COM | 212.401.0039

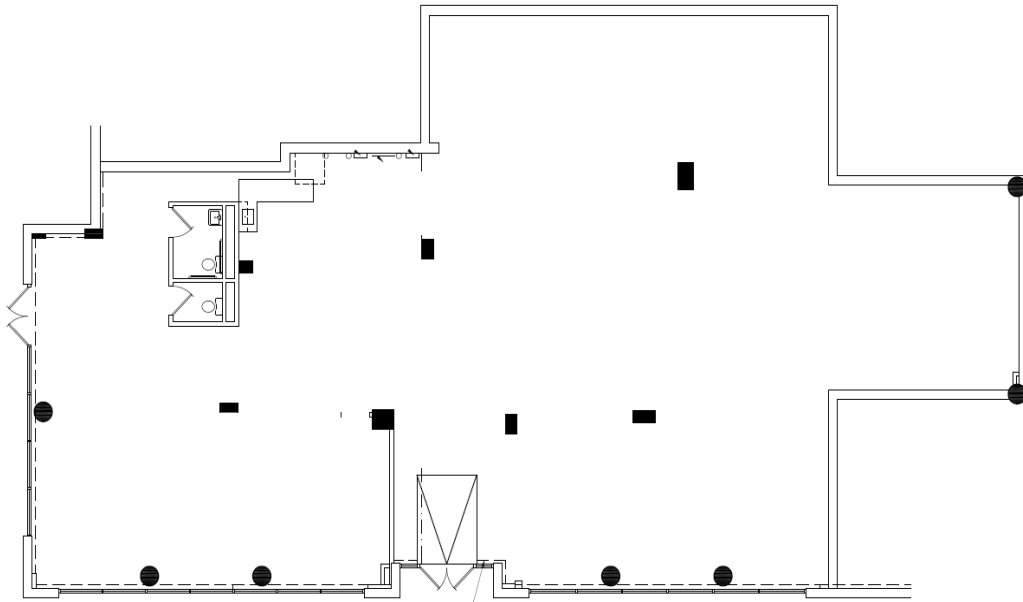
**JOSHUA T. KAIDANOW**

JK Aidanow@AMP-SOLUTIONS.COM | 212.466.6003

# 1450 WASHINGTON ST.

HOBOKEN | NEW JERSEY

## BUILDING PLAN



## LOCATION

Between 14th & 15th Street

## FRONTAGE

90 feet wraparound

## SIZE

Ground 5,111 SF

## CEILING HEIGHTS

Ground +/-12 Feet

## FORMERLY

Daybase

## ASKING RENT

Upon Request

## POSSESSION

Immediate

## TERM

Short and Long Term

## NEIGHBORS

Cork Wines & Spirits, Toastique, SoulCycle, DUMBO Market, Hoboken Montessori, Trader Joe's, City Bistro, CVS, Chase Bank, New York Sports Club, Hoboken Historical Museum, Pilsener Haus Biergarten, Hoboken 14th

## COMMENTS

- Vibrant and bright space
- Corner Units
- High Ceilings
- Short walk to Hoboken waterfront
- Multiple parks within walking distance



MATTHEW S. KRELL

DANIEL A. BODNER

JOSHUA T. KAIDANOW

MKRELL@AMP-SOLUTIONS.COM | 212.328.8537

DBODNER@AMP-SOLUTIONS.COM | 212.401.0039

JK Aidanow@AMP-SOLUTIONS.COM | 212.466.6003

AMP-SOLUTIONS.COM

This information has been secured from sources we believe to be reliable, but we make no representations as to the accuracy of the information. References to square footage are approximate. Tenant must verify the information and bears all risk for any inaccuracies.