



# 93 NORTH 6<sup>TH</sup> ST.

WILLIAMSBURG | BROOKLYN, NY

Retail Space  
For Lease  
Matthew S. Krell  
Daniel A. Bodner  
Josh S. Kaidanow  
212-328.8740  
www.amp-solutions.com  
#RetailSpace

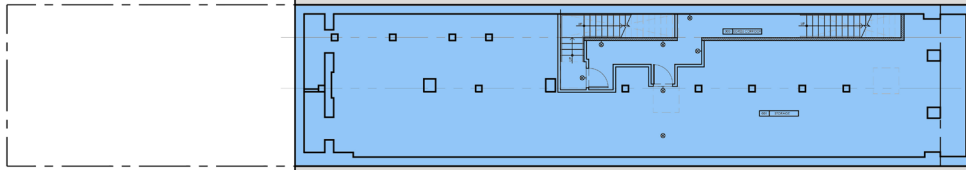
**MATTHEW KRELL**  
**DANIEL BODNER**  
**JOSH K Aidanow**

MKRELL@AMP-SOLUTIONS.COM | 212.328.8740  
DBODNER@AMP-SOLUTIONS.COM | 212.401.0039  
JK Aidanow@AMP-SOLITIONS.COM | 212.466.6003

# 93 NORTH 6<sup>TH</sup> ST.

WILLIAMSBURG | BROOKLYN, NY

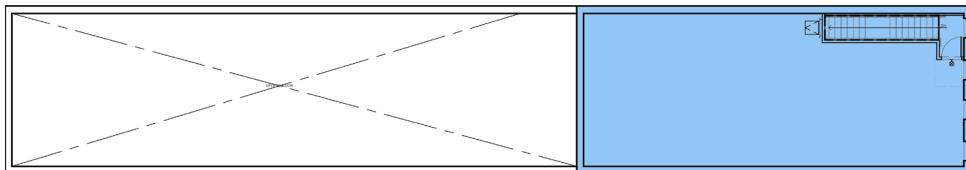
## CELLAR FLOOR



## FIRST FLOOR



## SECOND FLOOR



## LOCATION

North side of North 6th Street  
between Berry and Wythe

## FRONTAGE

24 feet on North 6th St.

## SIZE

Ground: 3,640 SF  
Second Floor: 1,475 SF  
Lower Level: 2,640 SF

## CEILING HEIGHTS

Ground: +/- 24 FT  
Second Floor: +/- 12 FT

## FORMERLY

N/A

## ASKING RENT

Upon Request

## POSSESSION

Immediate

## TERM

Pop-Up, Short and Long Term

## NEIGHBORS

Patagonia (coming soon), Nike (coming soon), Aland Smorgasburg, Brooklinen, Music Hall of Williamsburg, Sandro, Maje, Santander Work Café, Urban Outfitters, Madewell Mens, Vans, Everlane, Creed, Le Labo, Marine Layer, Warby Parker, Buck Mason, Madewell and Lululemon.

## COMMENTS

- Fully redeveloped in 2020
- Perfectly situated in the heart of the North 6th retail corridor
- Surrounded by Williamsburg's best retail co-tenancy
- Column free with soaring ceilings



**MATTHEW S. KRELL**  
**DANIEL A. BODNER**  
**JOSH K Aidanow**

MKRELL@AMP-SOLUTIONS.COM | 212.328.8740  
DBODNER@AMP-SOLUTIONS.COM | 212.401.0039  
JK Aidanow@AMP-SOLUTIONS.COM | 212.466.6003

[AMP-SOLUTIONS.COM](http://AMP-SOLUTIONS.COM)

This information has been secured from sources we believe to be reliable, but we make no representations as to the accuracy of the information. References to square footage are approximate. Tenant must verify the information and bears all risk for any inaccuracies.